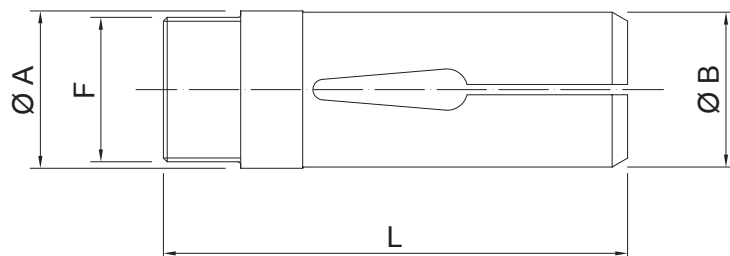


/ Pinze spingibarra Mory-Say



/ Pinze spingibarra Mory-Say

CODICE "E"	DESCRIZIONE	DIMENSIONI				ALESAGGIO MAX		
		A	B	L	FILETTO F	Tonde	Esag.	Quadre
9258E	6/20 (Tipo Gildemeister)	25	25	90	M24x1	12	10	8
9276E	6/25-626 (Tipo Wickman)	31.9	31	133	Ø 30.07x24 fil'sin.	25	22	18
9319E	6/32-8/32 (Tipo Schutte)	43	40	130	M38x1.5	32	28	23
9336E	6/32-8/32 (Tipo Gildemeister)	41.2	39.8	136	M38x1.5 sin.	32	28	22
9372E	6/42-8/42 (Tipo Schutte)	51	48	158	M48x1.5	42	36	29
9409E	6/57 (Tipo Wickman)	65	64.3	171.5	Ø 62.50x22 fil'sin.	57	49	40
9445E	6/67 (Tipo Wickman)	76	74	179	Ø 73x24 fil'sin.	66	57	46