

# / Pinze pickup Gildemeister



Foro Dentellato Chiuso\* Foro Dentellato a piramide\*



Foro Liscio Foro Rigato Foro Dentellato

\*Esecuzione su richiesta

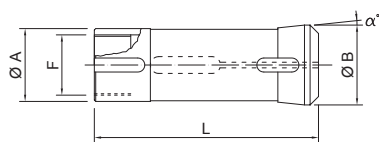


fig.1

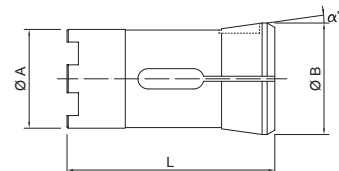


fig.3

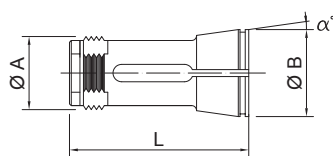


fig.2

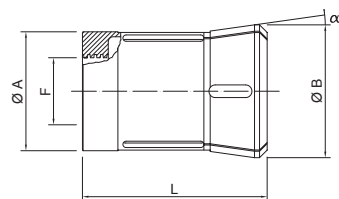


fig.4

/ Pinze pickup Gildemeister

CODICE	DESCRIZIONE	FIG	DIMENSIONI					ALESAGGIO MAX		
			A	B	L	α	FILETTO F	Tonde	Esag.	Quadre
C1101580	AS12	1	15,8	22	85	5°	M13x0,75 sin.	12	11	8
C0002800	AS16/20 GM20 IDRA.	1	28	32	64	8°	M24x1,5 sin.	24	20	16
C1102600	AS16/20 GM20 PNEUM.	1	26	28,5	80	6°	M21,5x0,75	20	17	14
Q0001870	GM16 AC	2	18,7	25	51,5	8°	AtcB Ø21x1,5 - 60°	16	14	11
Q0002800	GMC20	4	28	32	73	8°	ATCB	24	21	17
Q0002870	GM26 AC	2	28,7	35	64,5	8°	ActB Ø31x1,5 - 60°	26	22	18
C1103701	GS25 VARIANTE 32	1	37	45	78	15°	M30x1,5	32	28	22
C1103000	AS32	1	30	34,7	63	15°	M20x1,5	24	21	17
C0003900	AS32	1	39	44	90	8°	M34x1,5 sin	32	28	23
C1103802	AS32	1	38	43,1	80	15°	M24x1,5	32	28	22
Q0003900	GM32/35	3	39	44	82	8°	ActB 11x4	32	28	23
Q0004700	GM42	4	47	52,5	73	8°	ActB Ø29x2,7 - 30°	42	36	29
C0005600	AS48	1	56	60	95	8°	M51x1 sin.	48	42	34
C1104504	AS67	1	45	90,1	100	15°	M28x1,5	67	58	47