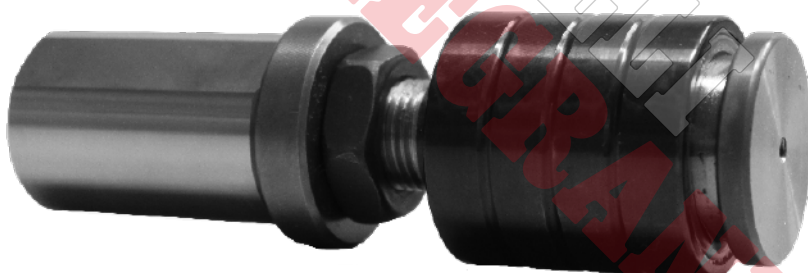
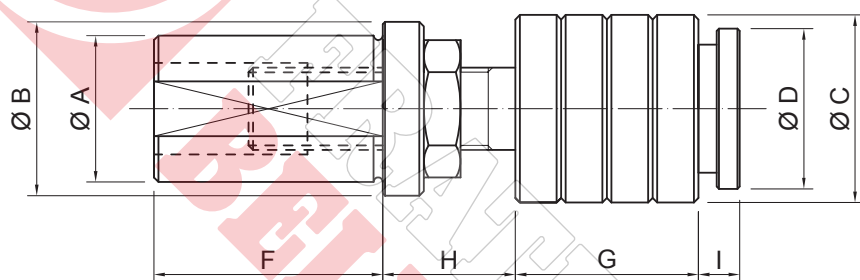


/ PRCV compensation push rod

The bar-stopping push rod is available in the warehouse either with a standard or VDI attachment.

It is lodged in the tool-holding turret: once the turret is carried the distance from the desired chuck, the bar is placed against the push rod, which absorbs the impact of the bar itself through its buffer, without setting off the machine alarm.



| CODE | PUSH ROD TYPE | DIMENSIONS | | | | | | | |
|-------------|---------------|------------|----|----|----|----|----|-------------|----|
| | | A | B | C | D | F | G | H min.+max. | I |
| 640 020 012 | PRCV 20 | 20 | 26 | 37 | 35 | 50 | 36 | 10÷50 | 10 |
| 640 030 018 | PRCV 30 | 30 | 38 | 37 | 35 | 60 | 36 | 10÷50 | 10 |
| 640 040 020 | PRCV 40 | 40 | 48 | 60 | 60 | 80 | 60 | 10÷50 | 15 |
| 640 050 020 | PRCV 50 | 50 | 62 | 60 | 60 | 80 | 60 | 10÷50 | 15 |